



DAYBREAK PECAN CO.



Daybreak Pecan Co

- 900 Acre Pecan farm located in Picacho and Eloy, Arizona
- Established in the 1970's by Bud Antle
- 100% Flood irrigated
- Typically 1 in 4 hedge and topping program
- Formerly owned by U of A
- Purchased by current owners in early 2000's
- I began working for DP in 2014 as Plant Manager
- Apprenticed under my dad, Max Spilsbury
- Took over Farm Management duties full time in 2018



Elevation and Biome

- 1,555' Above Sea Level
- Sonoran Desert



Weather

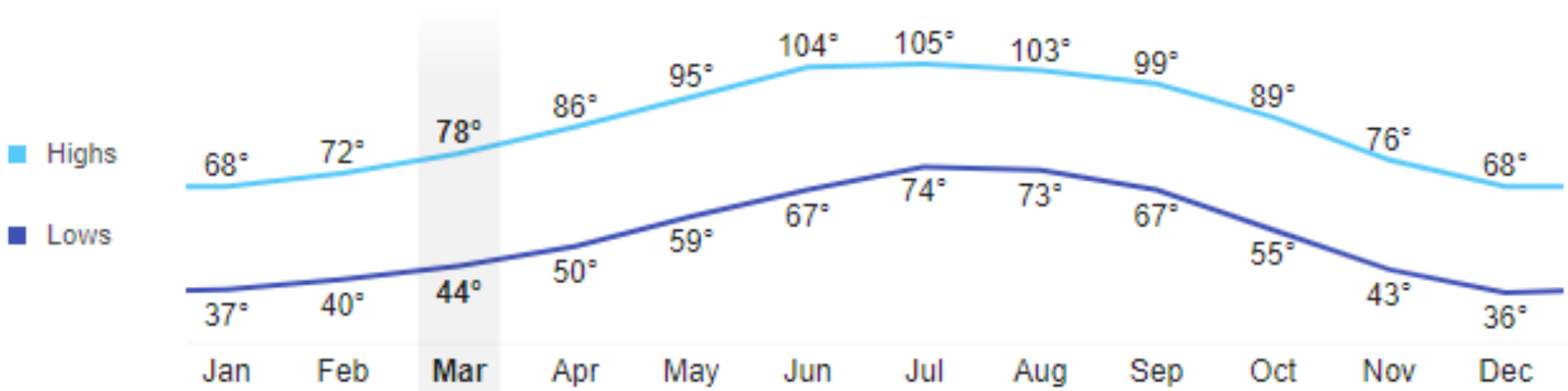


Eloy, AZ

Weather averages

Overview **Graphs**

Temperatures (°F)

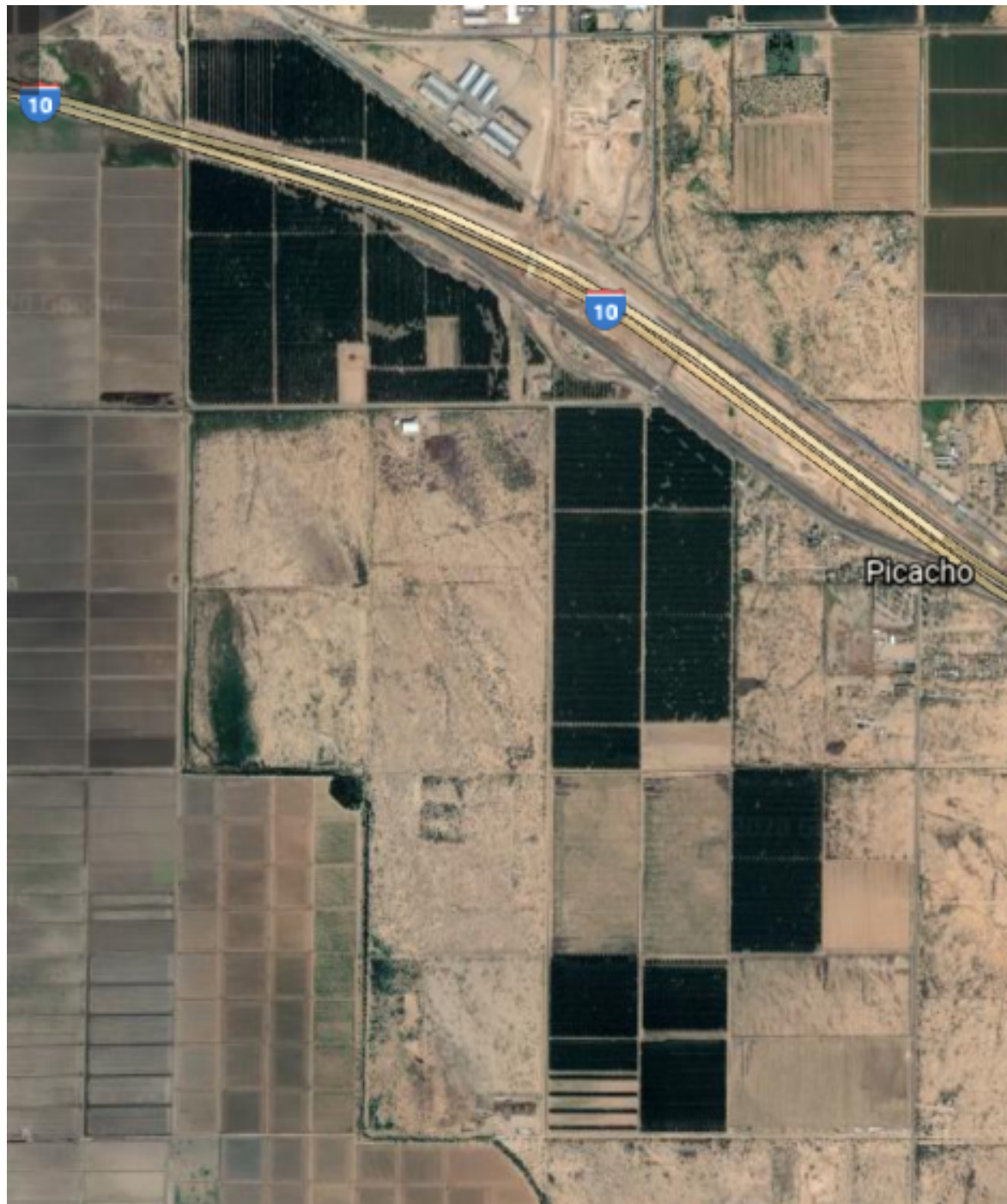


Varieties:

- Western
- Wichita
- Sioux
- Mohawk
- Cheyenne

Pollinators:

- Bradley
- Shoshone





Pros

- Good Soil (Mostly Sandy Loam)
- Good ground water (Low Salts)
- Availability of Colorado River (CAIDD) Water
- Long growing season
- Trees tend to make good nut size and kernel fill
- Ideal area for Wichita, Sioux, Cheyenne and Bradley
- Western Schley does okay



Cons

- ITS HOT!!!!!!
- Trees require more water than most to properly manage stress
- Pregerm (Vivipary) is a part of life
- Warm fall and winter temperatures affect quality and color
- Colorado River water will soon be a thing of the past
- Because we flood irrigate, we let grass grow in between our tree rows to help spread and slow irrigation sets and promote deeper water penetration which requires lots of mowing
- Western Schley Color Issues and prone to hidden embryo



What is our biggest Struggle?







How can we reduce Pregerm?

- Ask Edgardo Urias, The expert!
- Manage tree stress. Especially late in the growing season
- Eliminate varieties that are more susceptible
- Establish a green harvest program



Green Harvest Pecans

- Early field sampling is key
- Do not harvest until at least 80% Shuck Split and over 80% “Cafecitas” (Brown Strands)
- Requires more vigorous Shaking (try to get as many pecans off early as possible)
- Requires processing facility with Dryers
- Drying incurs extra processing costs. (Drying Equipment, Gas, Energy costs etc.)
- Nuts can take from 2-5 days to dry down to acceptable levels (high moisture can affect harvest schedules)
- There is danger in cracking nuts and affecting color if not monitored properly



















What did we Lose?

- Double harvest costs
- Requires more shakers to stay ahead of the rest of the harvesting equipment
- More wear and tear on harvest equipment, especially shakers (if you plan on keeping 4 shakers running, you need at least 5 shakers)
- Added stress of an extra harvest



What did we Gain?

- Reduced pregerminated Pecans from 30-50% down to 10-30%
- More sellable nut (better color in the green harvest)
- If everything went right, we get to farm another year
- Builds character





Conclusion

We do it nice, because we do it twice!