

Hurricane Michael

Damage & Recovery

Western Pecan Growers Association Conference

March 3rd, 2020

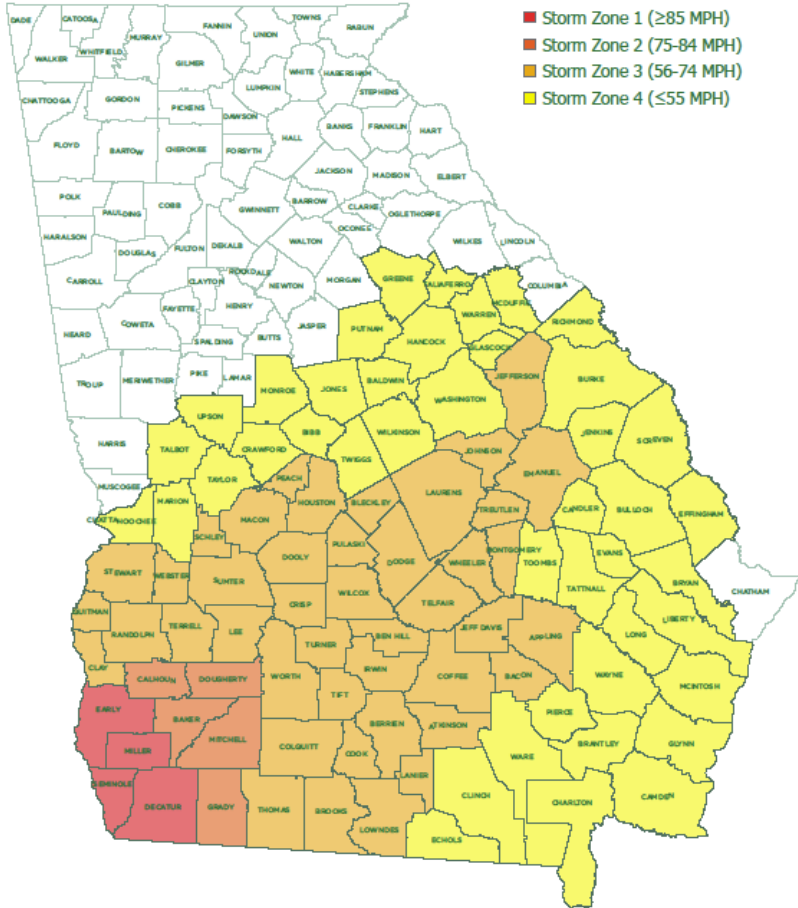
Presented by:

GPGA President Brent Brinkley



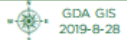
EMERGENCY
MANAGEMENT

HURRICANE MICHAEL
STORM RECOVERY ZONES



Data Source: Zones calculated from National Weather Service Data

0 25 50 100 Miles



Agricultural & Economic Impacts: Hurricane Michael

Recommendations for DR-4400-GA October 24, 2018

Georgia Agriculture Commissioner Gary W. Black has stated:

“Unfortunately, our worst thoughts were realized. We saw months and sometimes years of work just laid over on the ground in a matter of seconds. Georgia has long led in the production of several renowned commodities and now we have the dubious distinction of also leading in the devastation and incredible loss of these prominent crops. These are generational losses that are unprecedented, and it will take unprecedented ideas and actions to help our farm families and rural communities recover.”



Hurricane Michael Disaster Response



FARMGATE VALUE



TIMBER
\$681 million



COTTON
\$968 million



VEGETABLES
\$996 million



PECANS
\$356 million



POULTRY
\$4.4 billion



PEANUTS
\$624 million

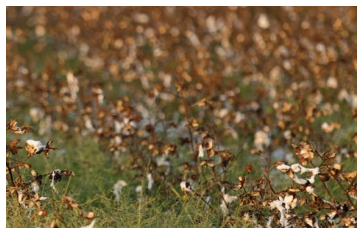


GREEN INDUSTRY
\$832 million



SOYBEANS
\$112 million

NOTE: All agricultural support sector loss estimates provided by the UGA Center for Agribusiness and Economic Development.



Cotton

\$550-600 million

Direct losses

Estimated by Jared R. Whitaker, Crop and Soil Sciences; Yangxuan Liu and Jeffrey H. Dorfman, Agricultural and Applied Economics

\$74 million

Agriculture sector losses

Green Industry

Includes container nursery, field nursery, greenhouse and turf

\$13 million

Direct losses: structures

Estimated by Julie Campbell and Matthew Chappell, Horticulture; and Ben Campbell, Agricultural and Applied Economics

Peanuts

\$10-20 million

Direct losses

Estimated by W. Scott Monfort, Crop and Soil Sciences; Jeffrey H. Dorfman and Adam Rabinowitz, Agricultural and Applied Economics

\$1.6 million

Agriculture sector losses

HURRICANE MICHAEL'S IMPACT

ON GEORGIA'S AGRICULTURAL ECONOMY



Poultry

\$20 million

Direct losses: houses

\$8 million

Direct losses: birds

Estimated by Jeffrey H. Dorfman, Agricultural and Applied Economics; Casey Ritz, Poultry Science

\$20 million

Agriculture sector losses

Soybeans

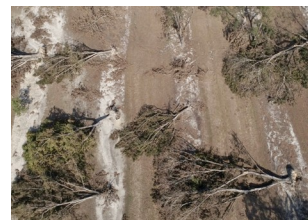
\$10 million

Direct losses

Estimated by Jeffrey H. Dorfman, Agricultural and Applied Economics; Mark Freeman, Crop and Soil Sciences

\$0.7 million

Agriculture sector losses



Pecans

\$100 million

Direct losses: crops

\$260 million

Direct losses: trees

\$200 million

Direct losses: future income

Estimated by Lenny Wells, Horticulture; Esendugue Greg Fonsah and Jeffrey H. Dorfman, Agricultural and Applied Economics

\$24.7 million

Agriculture sector losses



Timber

\$763 million

Direct losses

Estimated by the Georgia Forestry Commission

\$170 million

Agriculture sector losses

Estimated by the Georgia Forestry Commission

Vegetables

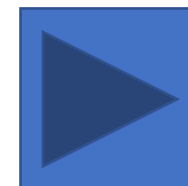
\$480 million

Direct losses

Estimated by Esendugue Greg Fonsah, Agricultural and Applied Economics; Bhabesh Dutta, Plant Pathology; and Timothy Coolong and Andre Luiz Biscaia Ribeiro da Silva, Horticulture

\$69 million

Agriculture sector losses



UNIVERSITY OF
GEORGIA
EXTENSION

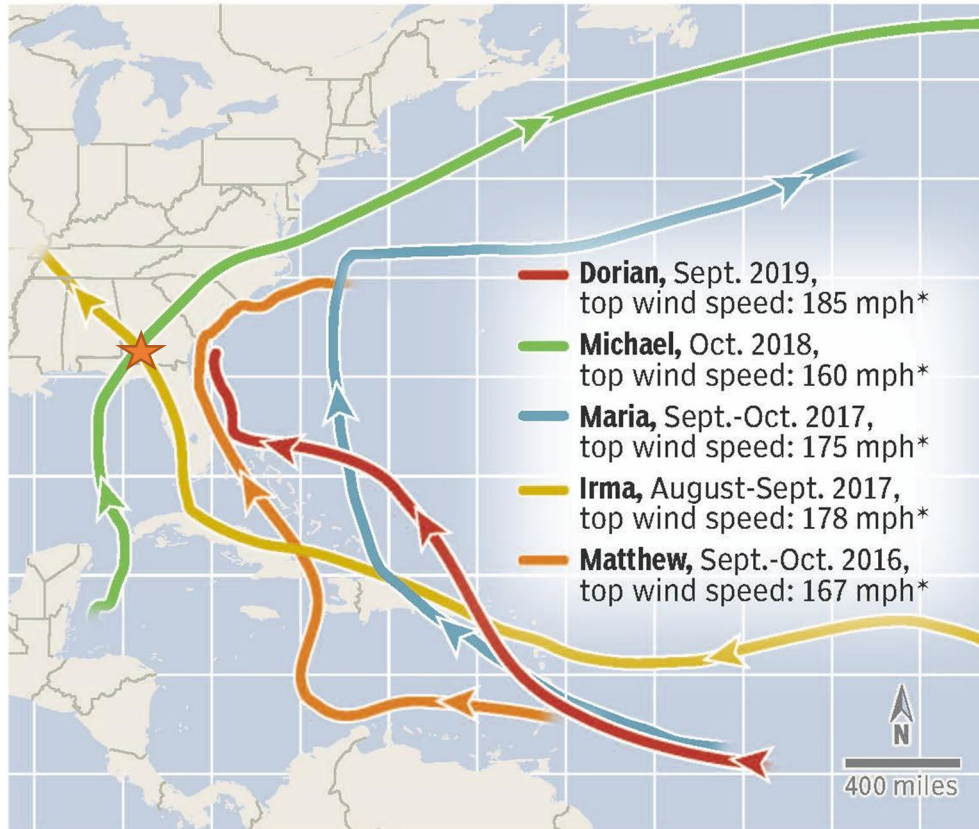
extension.uga.edu

An Equal Opportunity/Affirmative Action, Veteran, Disability Institution | Updated Nov. 1, 2018



Five Cat 5s in four years

The tropical Atlantic has created a rash of Category 5 hurricanes since 2016 with five forming, including Hurricane Michael, which made landfall in Florida's Panhandle in 2018.



*These are sustained wind speeds
Source: NOAA; maps4news.com/©HERE

GATEHOUSE MEDIA

2016 Hurricane Matthew

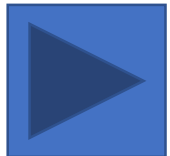
- Significant Pecan losses in SE Georgia
- Slow moving storm saturated soil followed by strong winds

2017 Hurricane Irma

- Most damaging wind event ever seen by Georgia's pecan crop
- Virtually every orchard affected by sustained tropical wind with gusts to 75 mph.
- Estimated 30% crop loss and tree losses ranging from tens to thousands

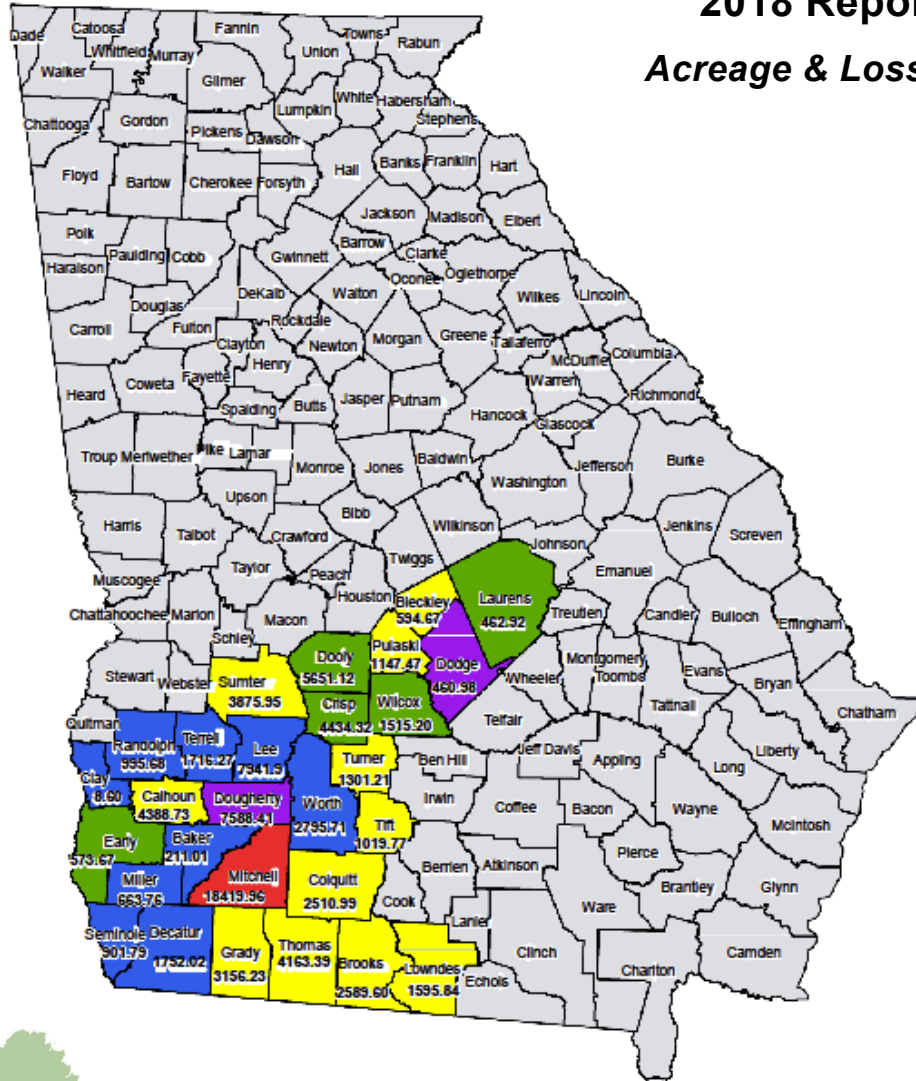
2018 Hurricane Michael

- Michael "trumps" Irma with agricultural and forestry "generational losses" in the billions
- Strongest storm in recorded history to enter Georgia. Entered in the SW and swept a path across the "pecan belt" exiting in the NE
- Huge power outage footprint. Some areas without power for months

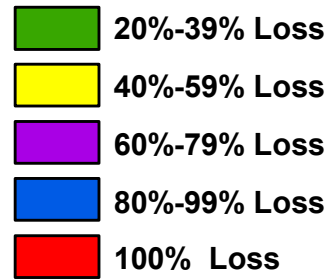


GEORGIA

2018 Reported Pecan Crop- All Varieties Acreage & Loss Estimates Due to Hurricane Michael



Loss Estimates



- Entered GA as a Category 4
- Loss of approx. 740,000 trees
- 27,000 acres---17% of Ga Acreage
- Loss of \$100 million from 2018 crop
- \$200 million in trees
- \$260 million in future income loss
- Worst damage from Albany to the SW and NE



Data: 2018 Pecan Acreage & Loss Estimates (EDW & STORM)
Created: 12/12/2018
Created By: Megan Smith Kennedy, GA GIS Specialist



United States Department of Agriculture

Office of the Secretary
Washington, D.C. 20250

DEC 11 2018

The Honorable Nathan Deal
Governor
State of Georgia
Atlanta, Georgia 30334

Dear Governor Deal:

On November 16, 2018, the acting Georgia State Executive Director of the Farm Service Agency (FSA), U.S. Department of Agriculture (USDA), requested a primary county disaster designation for 76 Georgia counties due to losses caused by Hurricane Michael that occurred from October 9 through October 11, 2018.

USDA reviewed the Loss Assessment Reports and determined that there were sufficient production losses to warrant a Secretarial natural disaster designation; therefore, I am designating all 76 counties as primary natural disaster areas. In accordance with section 321(a) of the Consolidated Farm and Rural Development Act, additional areas of your state and adjacent states are named as contiguous disaster counties. Enclosed you will find documentation that provides a detailed list of all primary and contiguous counties impacted by this disaster.

A Secretarial disaster designation makes farm operators in primary counties and those counties contiguous to such primary counties eligible to be considered for certain assistance from FSA, provided eligibility requirements are met. This assistance includes FSA emergency loans. Farmers in eligible counties have 8 months from the date of a Secretarial disaster declaration to apply for emergency loans. FSA considers each emergency loan application on its own merits, taking into account the extent of production losses on the farm and the security and repayment ability of the operator.

Local FSA offices can provide affected farmers with further information.

Sincerely,


Sonny Perdue
Secretary

Enclosure

An Equal Opportunity Employer

Disaster Designation Areas for Georgia and Contiguous States

Primary Counties:

Georgia	(76)		
Appling	Cook	Johnson	Sumter
Atkinson	Crawford	Lanier	Tattnell
Bacon	Crisp	Laurens	Taylor
Baker	Decatur	Lee	Telfair
Ben Hill	Dodge	Long	Terrell
Berrien	Dooly	Lowndes	Thomas
Bibb	Dougherty	Macon	Tift
Bleckley	Early	Miller	Toombs
Brantley	Echols	Mitchell	Treutlen
Brooks	Emanuel	Montgomery	Turner
Bulloch	Evans	Peach	Twiggs
Burke	Glascok	Pierce	Ware
Calhoun	Grady	Pulaski	Washington
Candler	Hancock	Quitman	Wayne
Charlton	Houston	Randolph	Webster
Clay	Irwin	Schley	Wheeler
Clinch	Jeff Davis	Screven	Wilcox
Coffee	Jefferson	Seminole	Wilkinson
Colquitt	Jenkins	Stewart	Worth

Contiguous Counties:

Georgia	(19)			
Baldwin	Glynn	McIntosh	Putnam	Taliaferro
Bryan	Greene	Marion	Richmond	Upson
Camden	Jones	Monroe	Talbot	Warren
Chattahoochee	Liberty			
Effingham	McDuffie			

Contiguous Counties in Adjacent States:

Alabama	(4)		
Barbour	Henry	Houston	Russell
Florida	(9)		
Baker	Hamilton	Leon	
Columbia	Jackson	Madison	
Gadsden	Jefferson	Nassau	
South Carolina	(4)		
Aiken	Allendale	Barnwell	Hampton



Programs for Hurricane Michael Recovery

- ECP
- Forest Debris Management Program*
- WHIP, WHIP+
- Block Grant



Tree Recovery Update

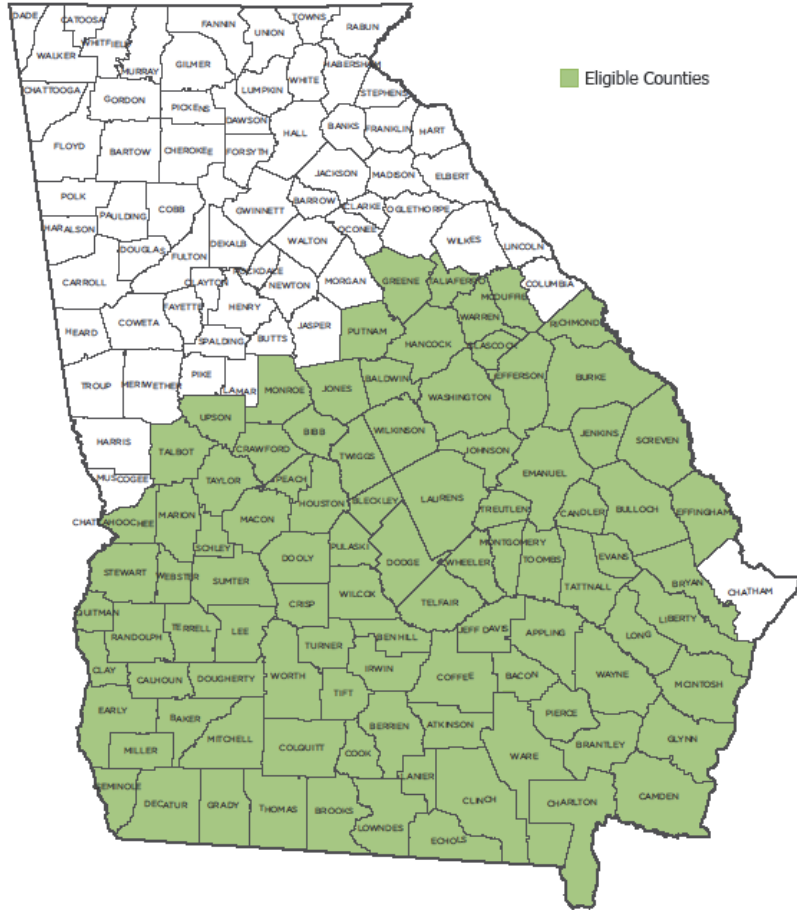
- Many trees re-planted Jan-March 2019
- Saw die-back of limbs and trees continuing throughout the summer of 2019
- Fruiting wood must re-grow throughout much of SW Georgia
- Anticipate stronger crop in this region in 2020

Farmrecovery.com



GEORGIA DEPARTMENT
OF AGRICULTURE

FARM RECOVERY
BLOCK GRANT
ELIGIBLE COUNTIES



The enrollment process will take place entirely online at farmrecovery.com. Once the application opens, eligible producers should create a farmrecovery.com account to add required information and upload documents. Applicants can save their application to finish later throughout the three-week enrollment period. Please monitor farmrecovery.com for more information on the application dates and deadlines.

- (March 18th – April 8th). The \$347 Million Block Grant Includes: **Timber, Pecans, Fruit & Vegetable, Poultry, Beef, Dairy and Uninsured Infrastructure.**



All applications

Numbers:

- **Addresses of the physical locations of damage including GPS (latitude and longitude) coordinates**
- **Itemized losses by commodity for each location**

Documents:

- *Recommended but not required:* **2018 Property Tax Assessment**



Pecans

Numbers:

- Total number of trees destroyed
- Total number of trees and acres in production

Documents:

- *If applicable:* **copy of application for Tree Assistance Program through USDA**

Thank you for your attention and I'm happy to take any questions

